

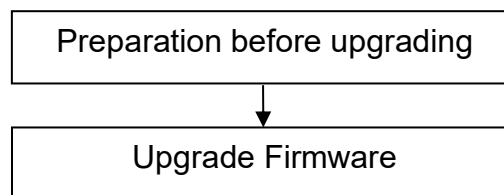
Upgrade Guidance for FosBaby FosBabyP1

This firmware is for FosBaby, FosBaby P1.

Please check your camera model on the sticker. Updating with the wrong firmware could severely damage and/or brick your camera. Please make sure the firmware is correct.

Note:

1. System firmware 1.5.3.15, App firmware 2.x.2.18 **can** upgrade to this version.
2. **If you have older firmware version, such as** System firmware 1.5.1.11 or 1.5.2.12, App firmware 2.2x.1.153, 2.2x.1.155, 2.2x.1.215, 2.2x.1.218, 2.2x.1.220 or 2.x.2.5, **please upgrade to v1.5.3.15_2.x.2.18 first;**



Preparation before upgrading:

1. Please restart your camera before the upgrading;
2. DO NOT upgrade firmware over internet, just finish it in LAN;
3. Keep power on during the upgrading;
4. Logging your camera as administrator first, upgrade firmware on web page.
5. Suggest to unplug SD card before upgrading.

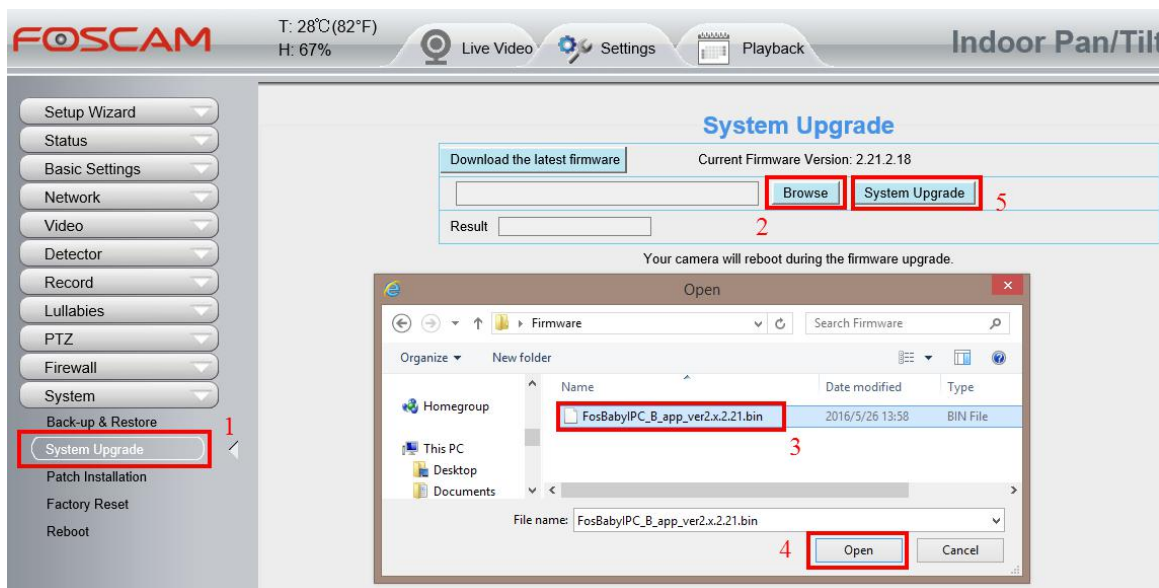
Upgrade the Firmware:

Step 1

Login your camera, please go to **Settings → System → System Upgrade**.

Click **Browse/Choose File**, find the file [FosBabyIPC_B_app_ver2.x.2.21.bin](#) you've extracted in your local hard driver, then click **Open**. Camera will upgrade after you clicking **System Upgrade**.

Note: When "Upgrading, do not power off ... Xs" pops up, camera IP will disappear from the IP Camera Tool. Then camera will reboot itself, DO NOT power off the camera, please wait till the camera IP reappear in the IP Camera Tool.



Step 2

Login again to check if the **System Firmware Version**, **Application Firmware Version** and **Plug-In Version** upgrade correctly.

Note:

Please re-install the plug-in after firmware upgrade.

Device Information	
Refresh	
Camera Model	FosBaby P1
Camera Name	FosBabyP1
Camera ID	E8ABFA40B893
Camera Time	2016/05/26 14:34:27
System Firmware Version	1.5.3.16
Application Firmware Version	2.21.2.21
Plug-In Version	3.3.0.22

Congratulations, your camera successfully upgraded to the latest firmware!

End

--- by Foscam Technical Support Team